

# JL BLUE RESORT

JESOLO LIVING

***Two-bedroom apartment***

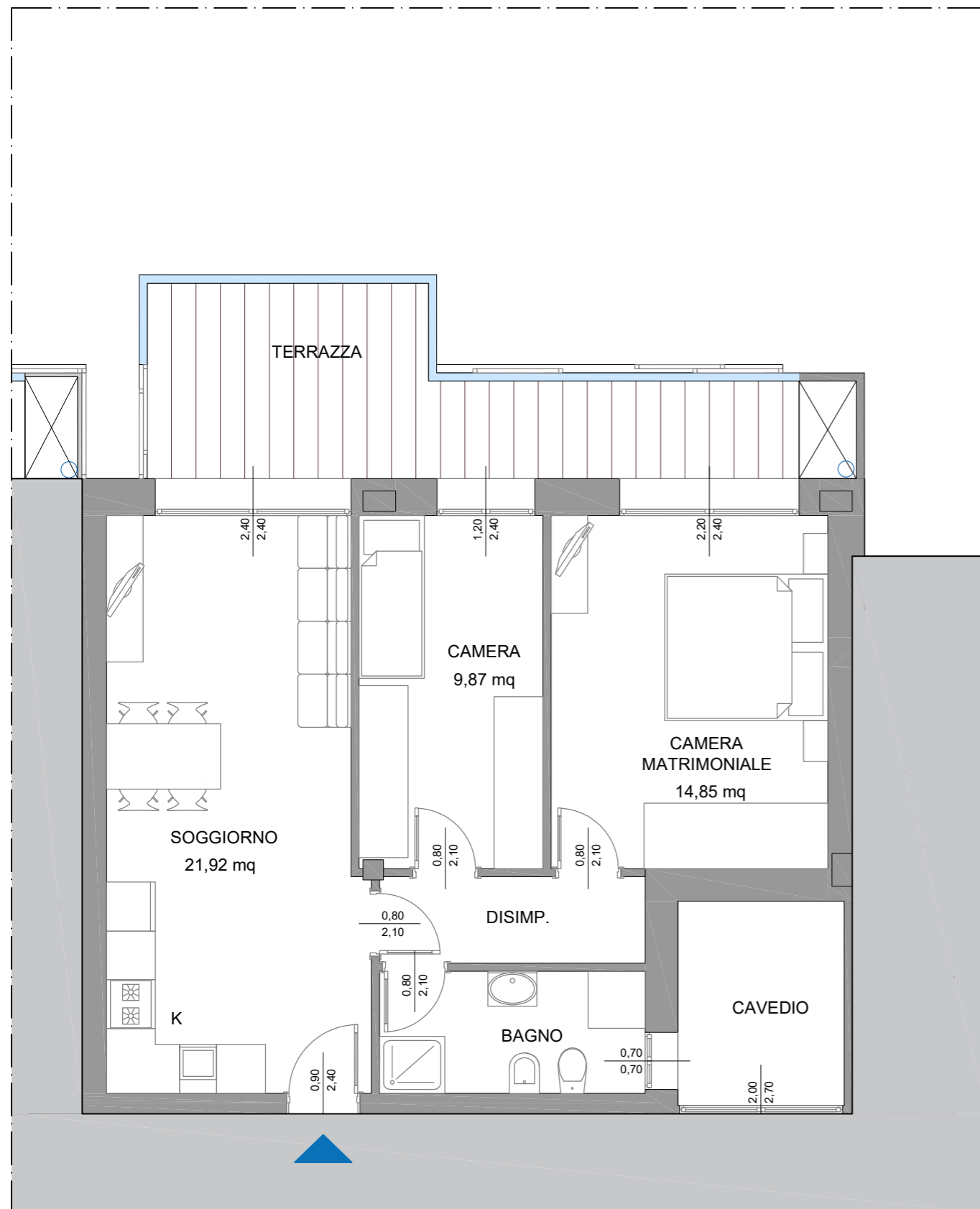




**JL BLUE RESORT**  
JESOLO LIVING

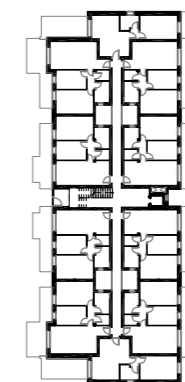
EDIFICIO 1  
**UNITA' A11**  
PIANO PRIMO

A11	SUP. LORDA	
ABITAZIONE	67,21	mq
TERRAZZA	14,86	mq
<hr/>		
SUP. COMMERCIALE	75,52	mq



0 m 5 m

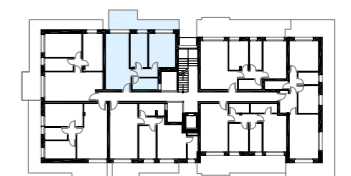
VIALE ORIENTE



EDIFICIO 3



EDIFICIO 2



EDIFICIO 1

MARE



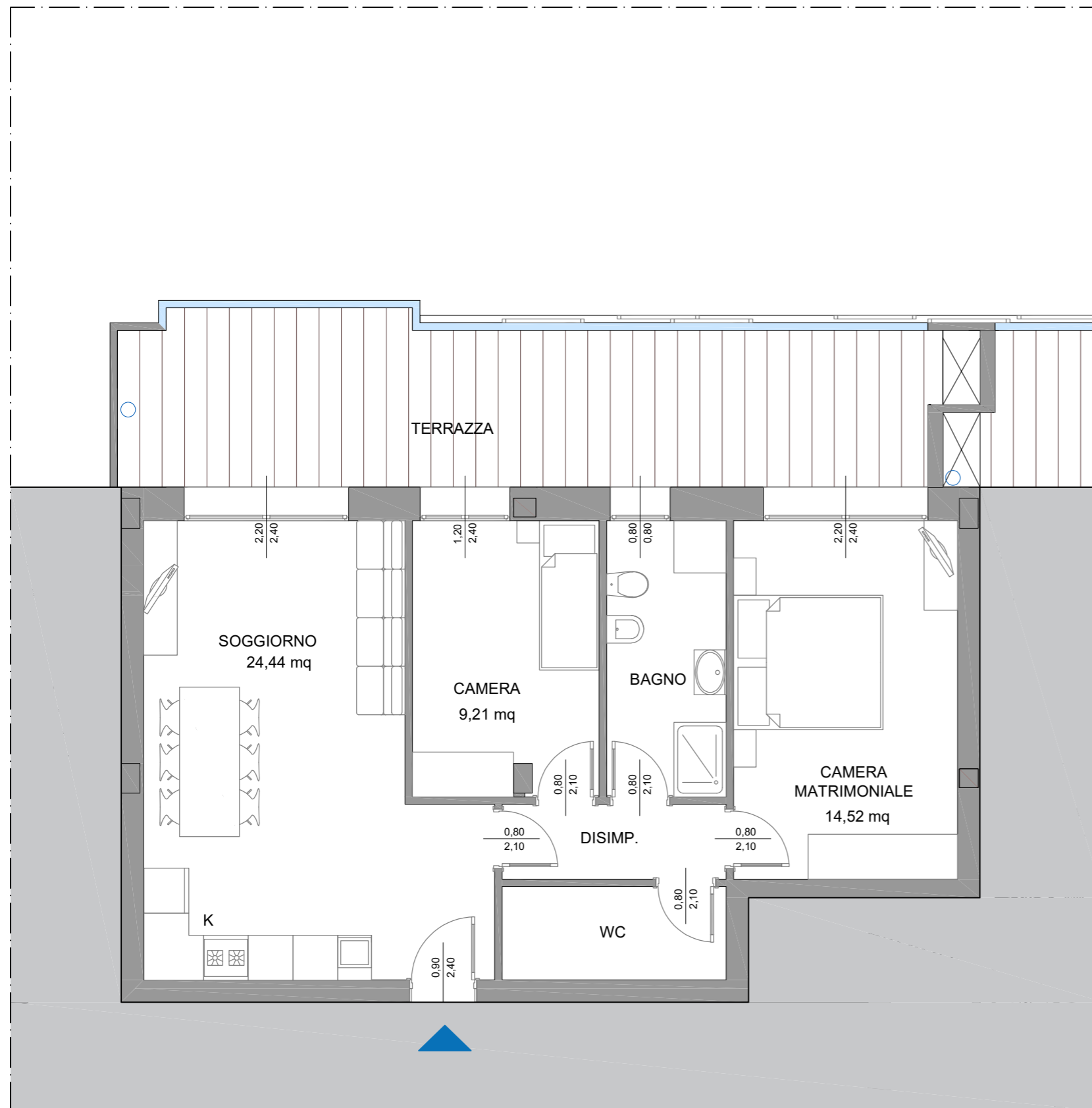
NB. QUANTO RAPPRESENTATO POTREBBE DISCOSTARSI LIEVEMENTE DAL PROGETTO ESECUTIVO



**JL BLUE RESORT**  
JESOLO LIVING

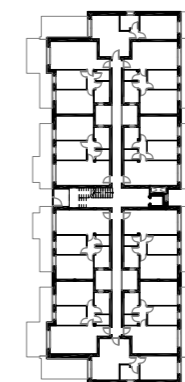
EDIFICIO 1  
**UNITA' A16**  
PIANO SECONDO

A16	SUP. LORDA	
ABITAZIONE	73,85	mq
TERRAZZA	24,87	mq
<hr/>		
SUP. COMMERCIALE	85,83	mq



0 m  5 m

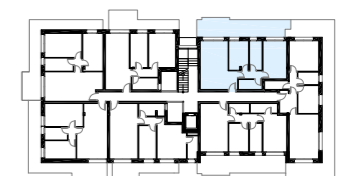
VIALE ORIENTE



EDIFICIO 3



EDIFICIO 2



EDIFICIO 1

MARE

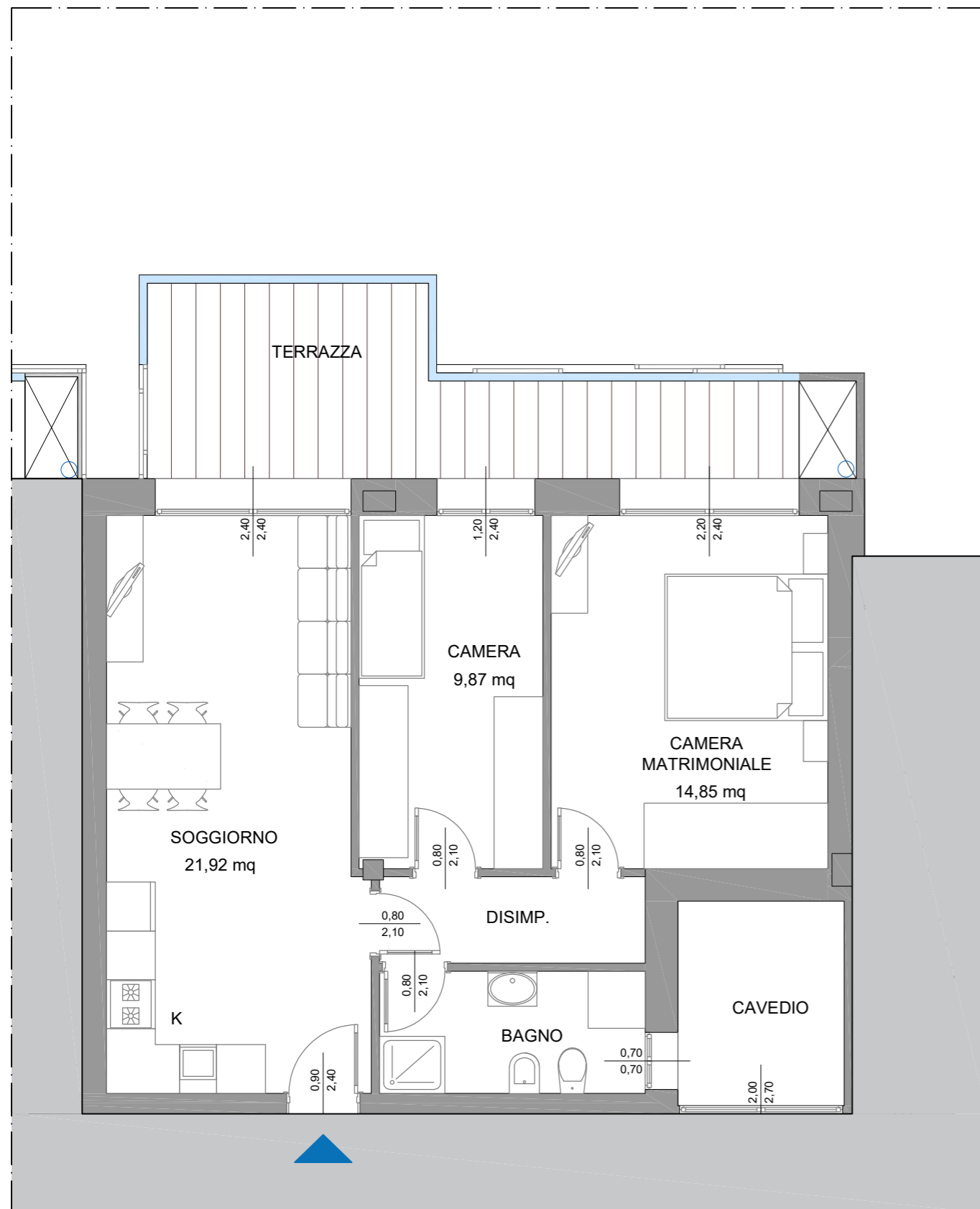




**JL BLUE RESORT**  
JESOLO LIVING

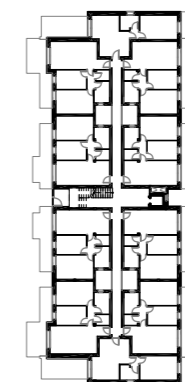
EDIFICIO 1  
**UNITA' A18**  
PIANO SECONDO

A18	SUP. LORDA	
ABITAZIONE	67,21	mq
TERRAZZA	14,86	mq
<hr/>		
SUP. COMMERCIALE	75,52	mq



0 m 5 m

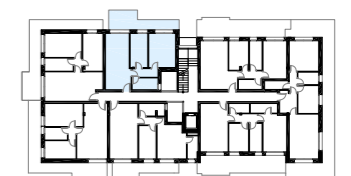
VIALE ORIENTE



EDIFICIO 3



EDIFICIO 2

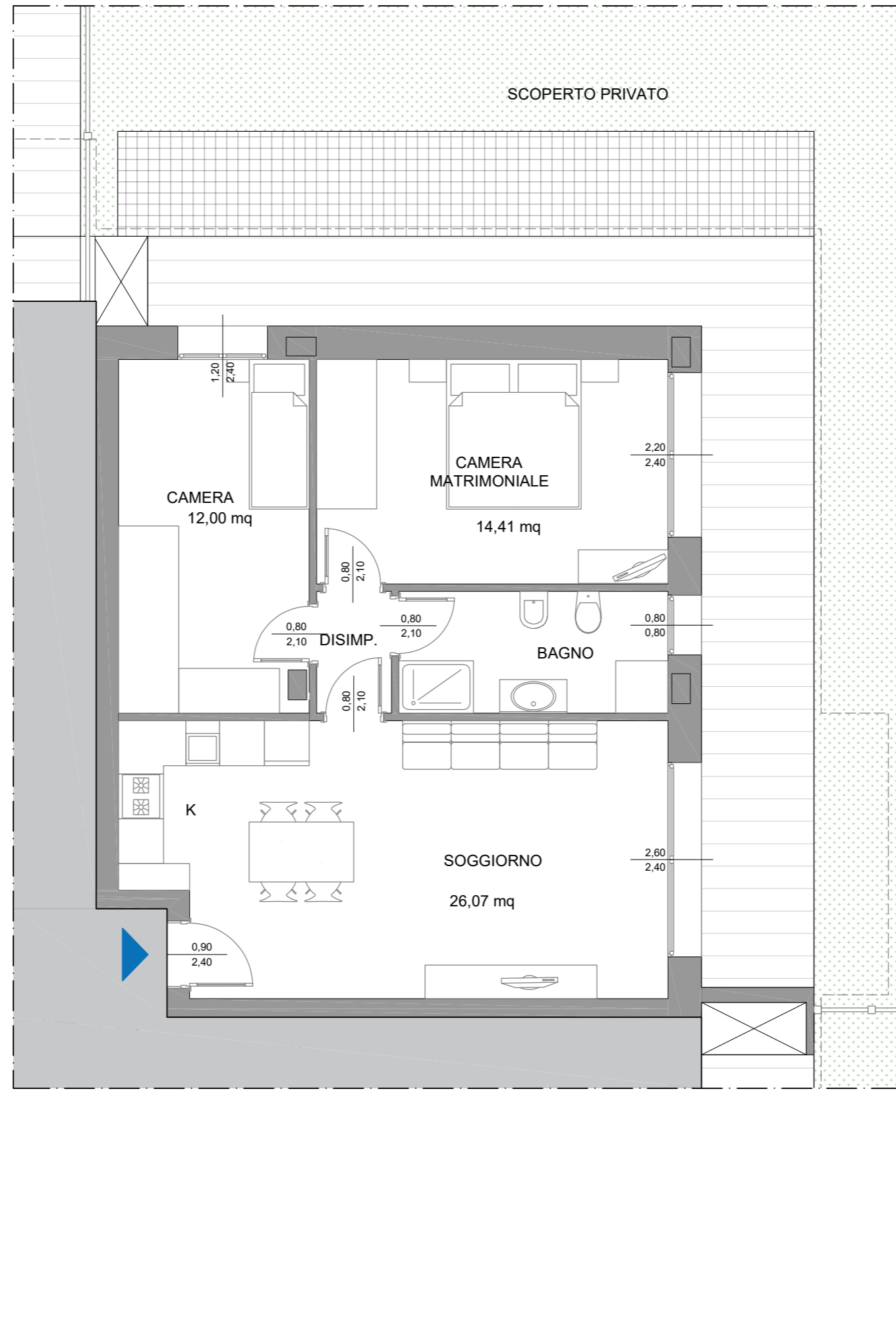
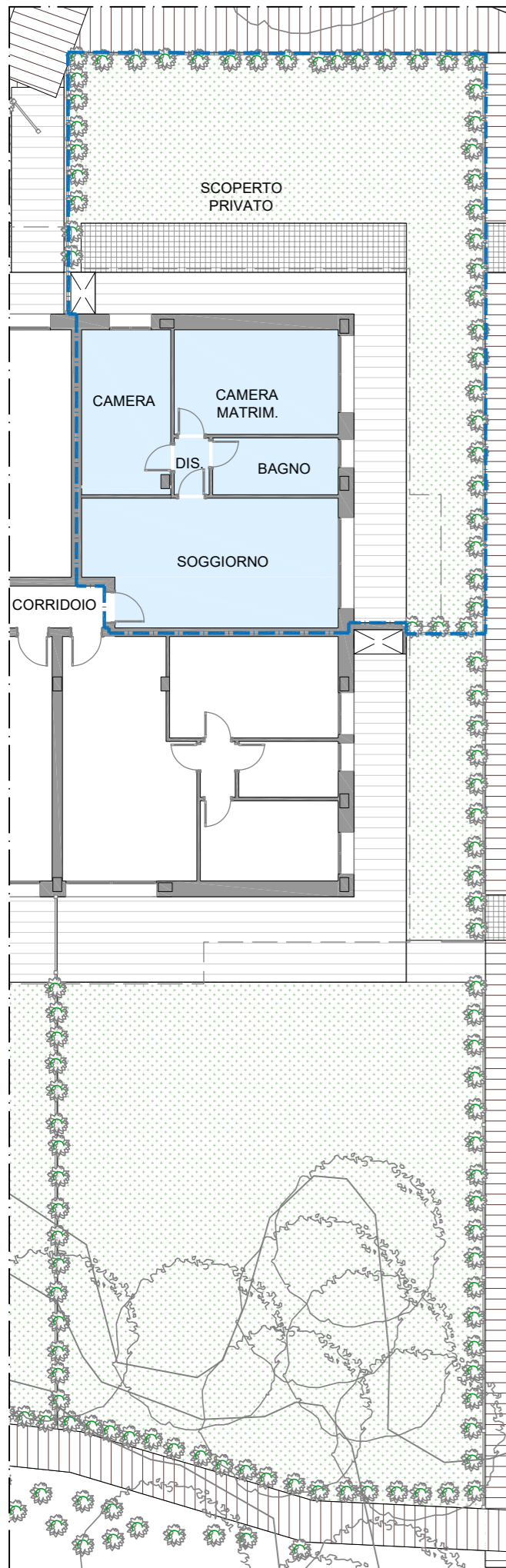


EDIFICIO 1

MARE



NB. QUANTO RAPPRESENTATO POTREBBE DISCOSTARSI LIEVEMENTE DAL PROGETTO ESECUTIVO

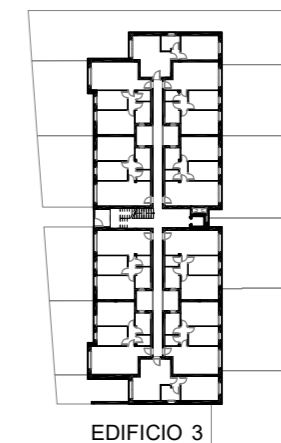


**JL BLUE RESORT**  
JESOLO LIVING

EDIFICIO 2  
**UNITA' B1**  
PIANO TERRA

B1	SUP. LORDA	
ABITAZIONE	71,57	mq
GIARDINO	125,55	mq
<hr/>		
SUP. COMMERCIALE	87,70	mq

VIALE ORIENTE



EDIFICIO 3



EDIFICIO 2



EDIFICIO 1

MARE



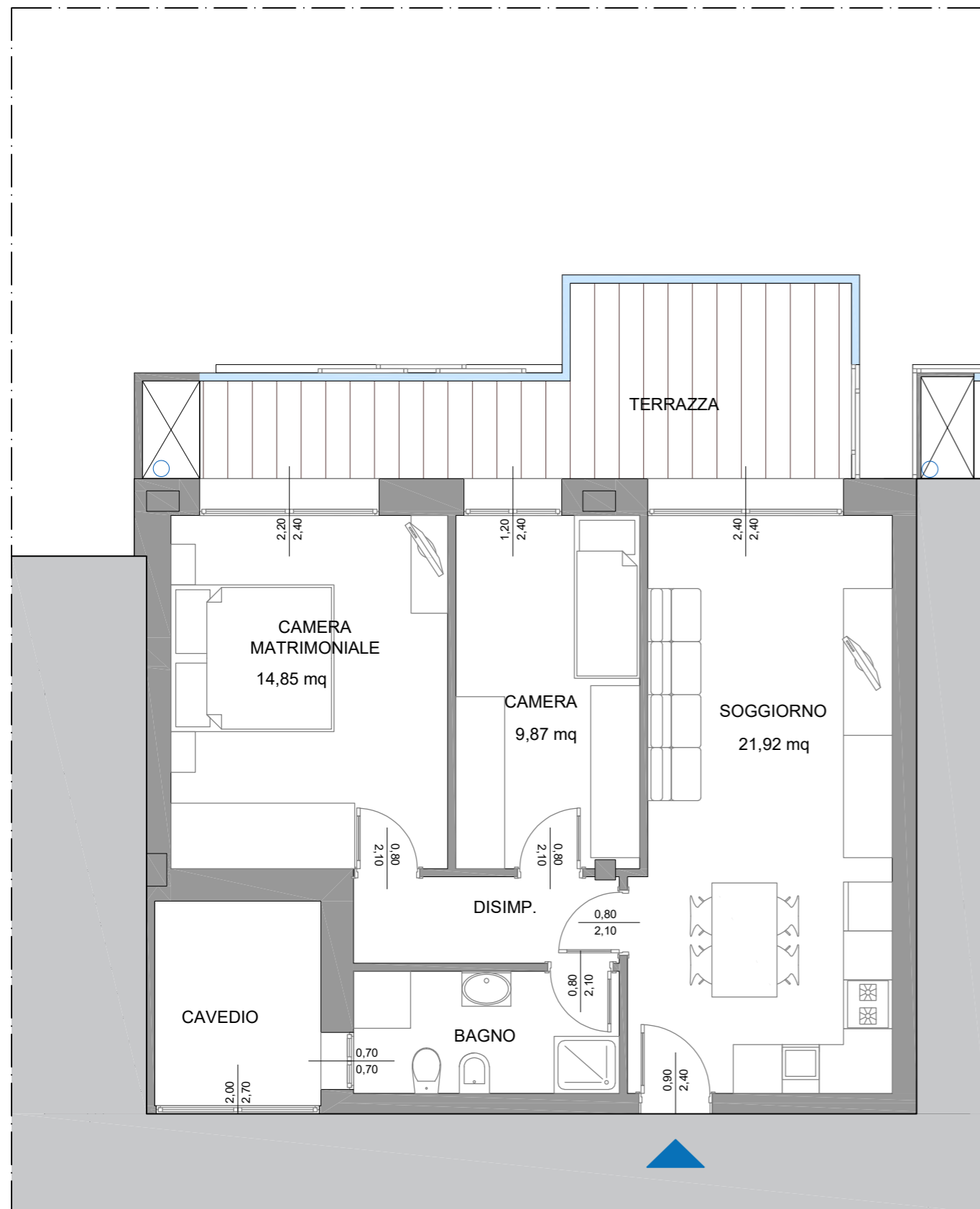
NB. QUANTO RAPPRESENTATO POTREBBE DISCOSTARSI LIEVEMENTE DAL PROGETTO ESECUTIVO



**JL BLUE RESORT**  
JESOLO LIVING

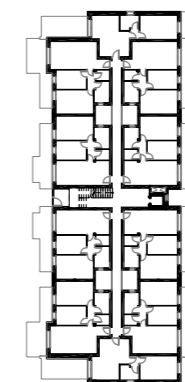
EDIFICIO 2  
**UNITA' B11**  
PIANO PRIMO

B11	SUP. LORDA	
ABITAZIONE	67,21	mq
TERRAZZA	14,86	mq
<hr/>		
SUP. COMMERCIALE	75,52	mq

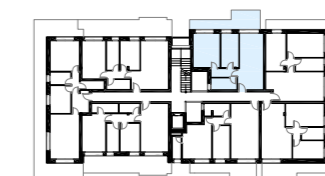


0 m  5 m

VIALE ORIENTE



EDIFICIO 3



EDIFICIO 2



EDIFICIO 1

MARE

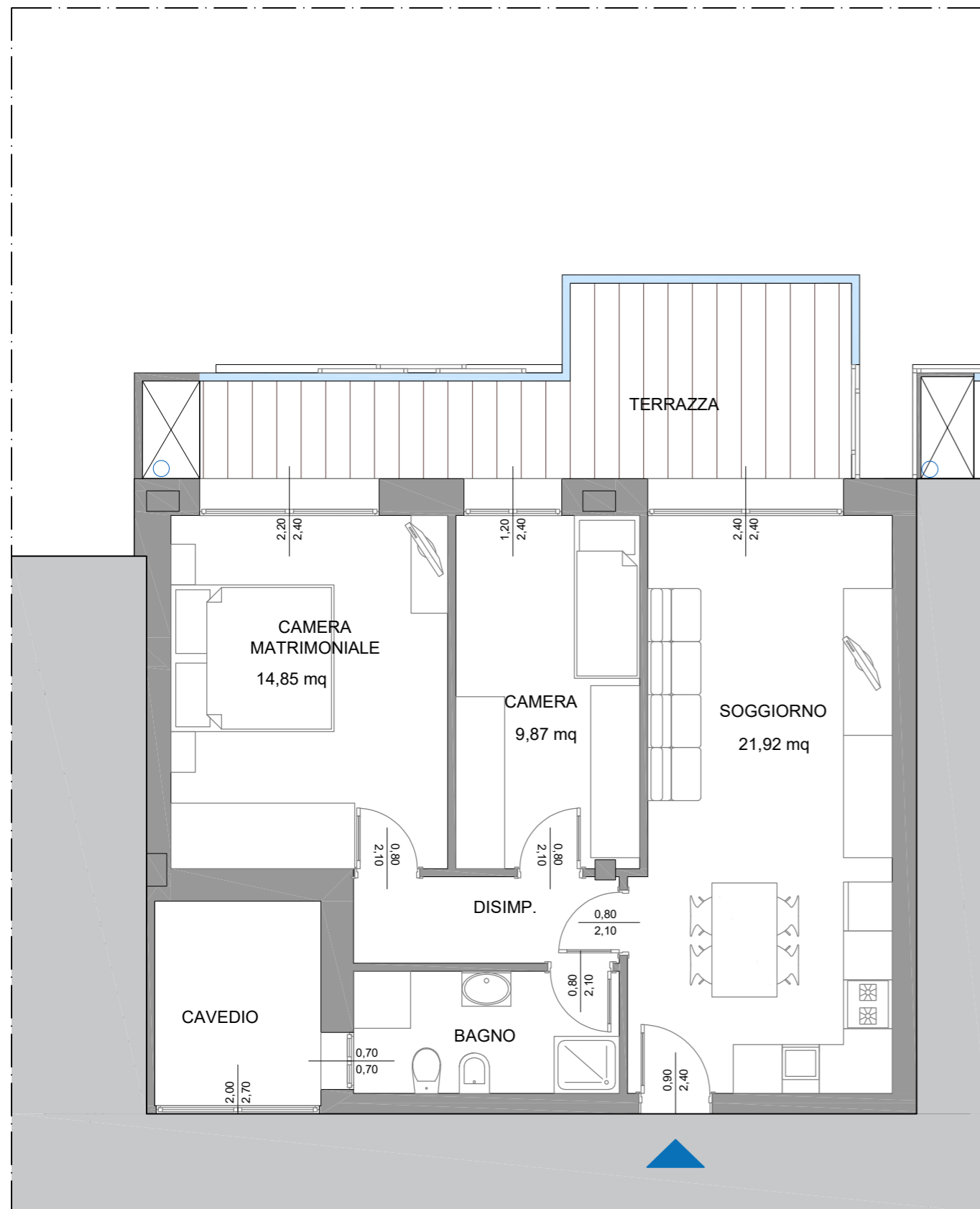




**JL BLUE RESORT**  
JESOLO LIVING

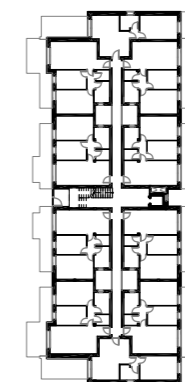
EDIFICIO 2  
**UNITA' B18**  
PIANO SECONDO

B18	SUP. LORDA	
ABITAZIONE	67,21	mq
TERRAZZA	14,86	mq
<hr/>		
SUP. COMMERCIALE	75,52	mq



0 m 5 m

VIALE ORIENTE



EDIFICIO 3



EDIFICIO 2



EDIFICIO 1

MARE

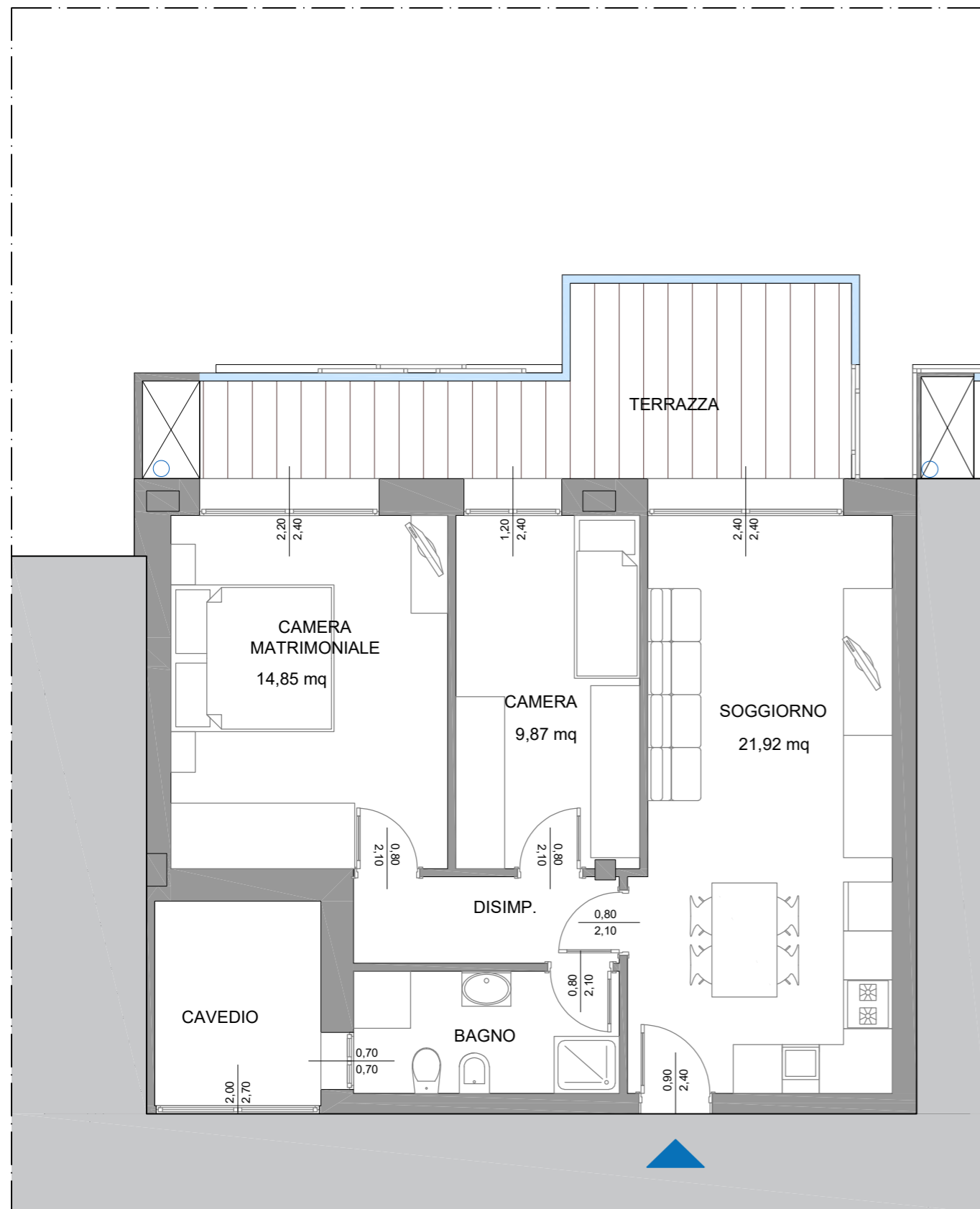




**JL BLUE RESORT**  
JESOLO LIVING

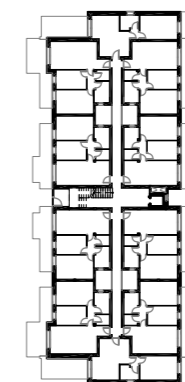
EDIFICIO 2  
**UNITA' B25**  
PIANO TERZO

B25	SUP. LORDA	
ABITAZIONE	67,21	mq
TERRAZZA	14,86	mq
<hr/>		
SUP. COMMERCIALE	75,52	mq

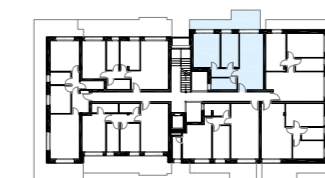


0 m 5 m

VIALE ORIENTE



EDIFICIO 3



EDIFICIO 2



EDIFICIO 1

MARE



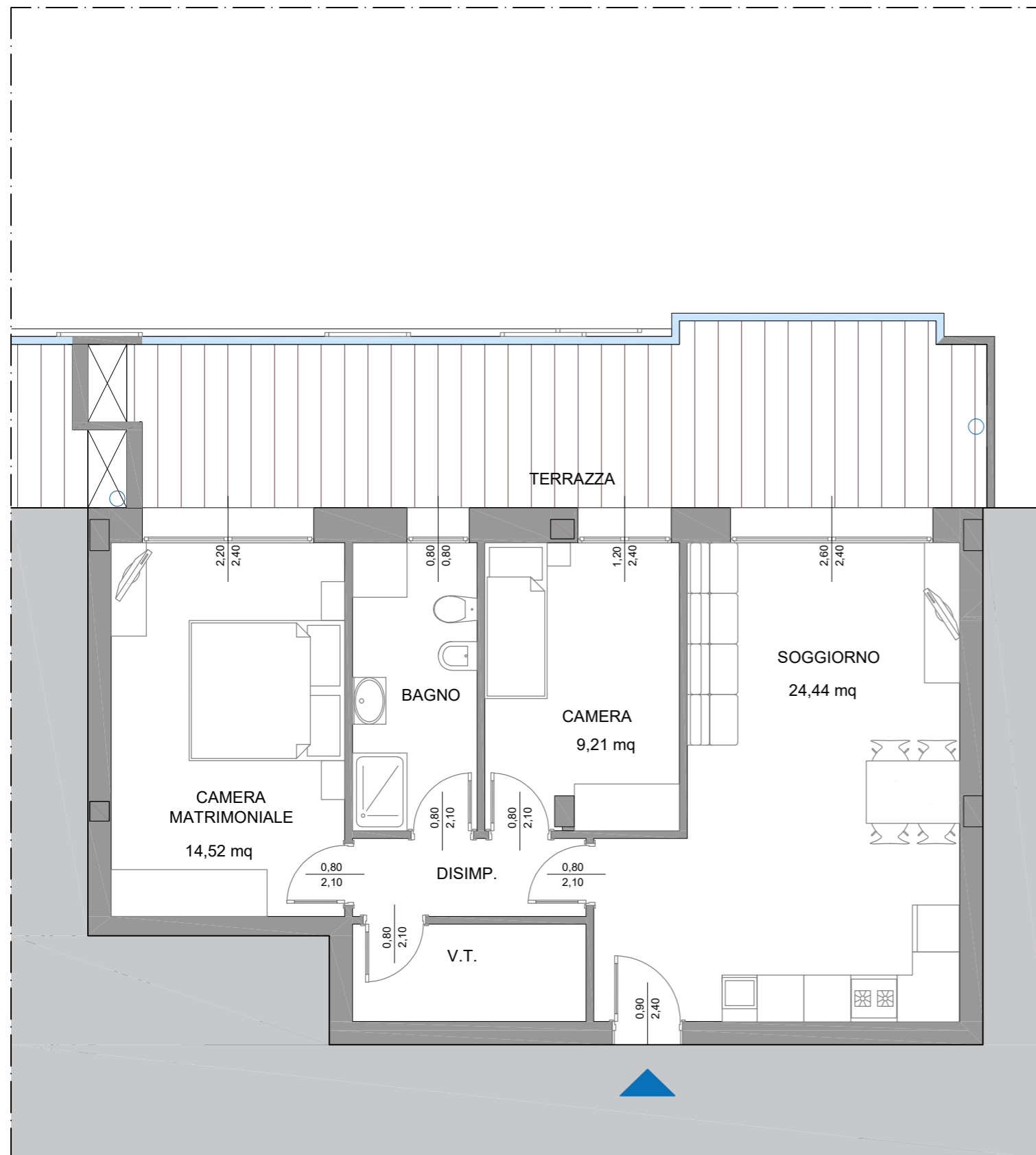
NB. QUANTO RAPPRESENTATO POTREBBE DISCOSTARSI LIEVEMENTE DAL PROGETTO ESECUTIVO



JL BLUE RESORT  
JESOLO LIVING

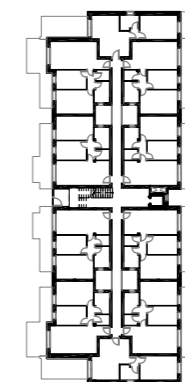
EDIFICIO 2  
**UNITA' B27**  
PIANO TERZO

B27	SUP. LORDA	
ABITAZIONE	73,85	mq
TERRAZZA	24,87	mq
<hr/>		
SUP. COMMERCIALE	85,83	mq

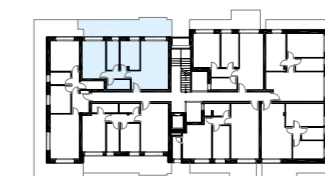


0 m 5 m

VIALE ORIENTE



EDIFICIO 3



EDIFICIO 2



EDIFICIO 1

MARE



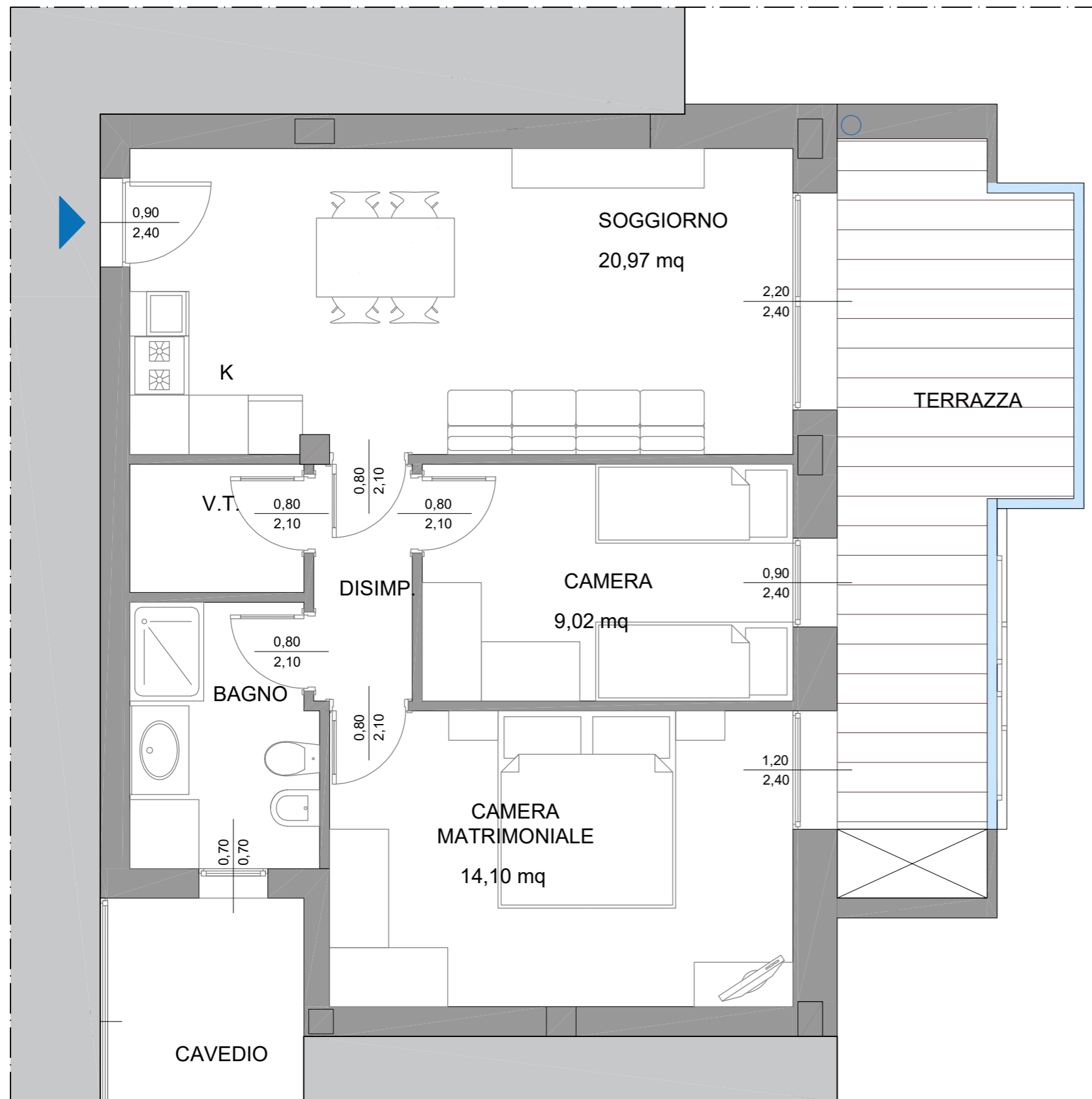
NB. QUANTO RAPPRESENTATO POTREBBE DISCOSTARSI LIEVEMENTE DAL PROGETTO ESECUTIVO



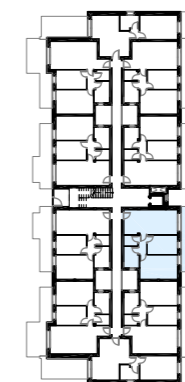
JL BLUE RESORT  
JESOLO LIVING

EDIFICIO 3  
**UNITA' C15**  
PIANO PRIMO

C15	SUP. LORDA	
ABITAZIONE	66,00	mq
TERRAZZA	15,28	mq
<hr/>		
SUP. COMMERCIALE	74,39	mq



VIALE ORIENTE



EDIFICIO 3



EDIFICIO 2



EDIFICIO 1

MARE



NB. QUANTO RAPPRESENTATO POTREBBE DISCOSTARSI LIEVEMENTE DAL PROGETTO ESECUTIVO

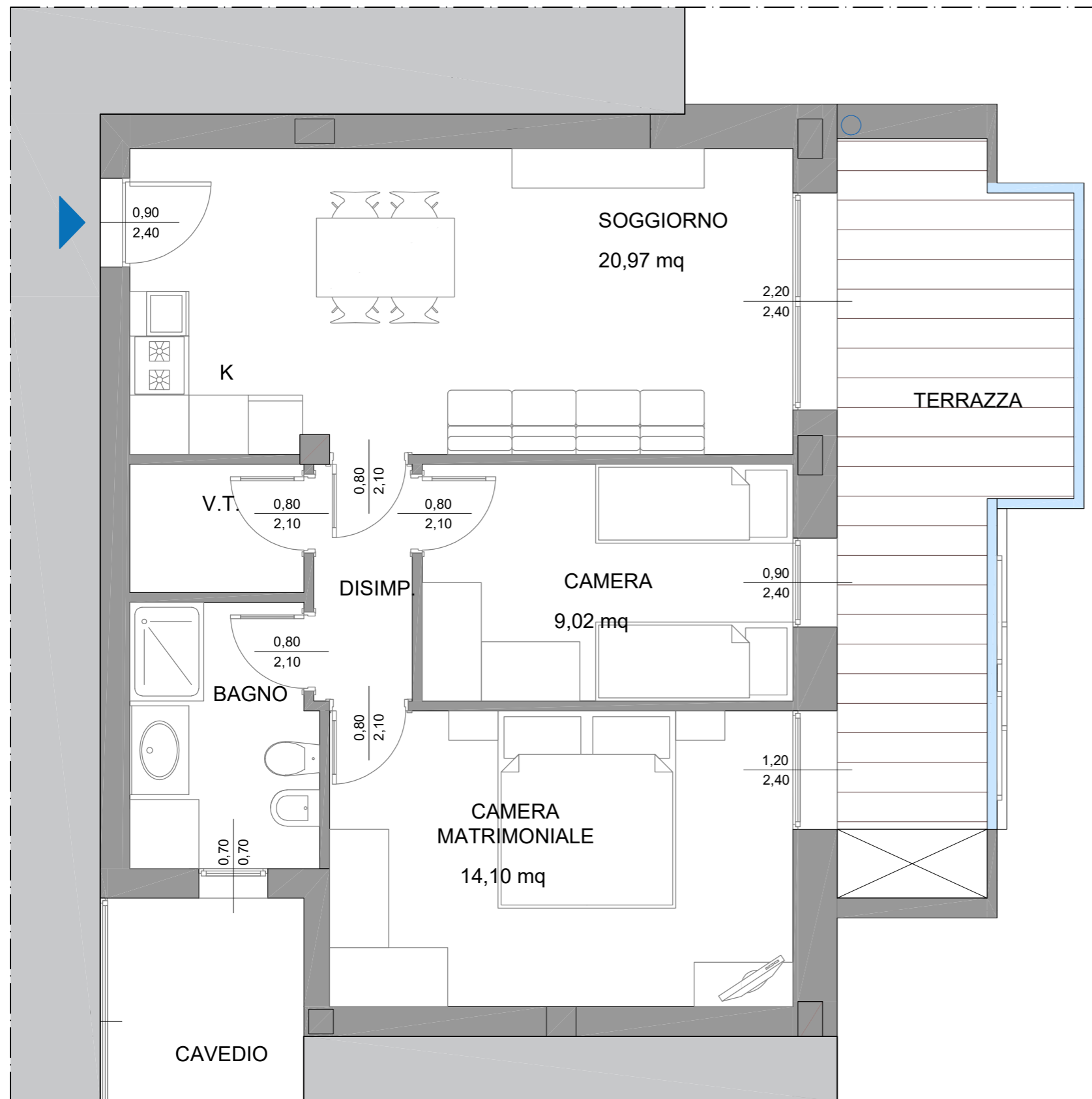


JL BLUE RESORT

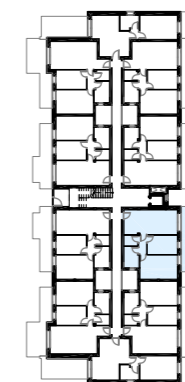
JESOLO LIVING

EDIFICIO 3  
**UNITA' C25**  
PIANO SECONDO

C25	SUP. LORDA	
ABITAZIONE	66,00	mq
TERRAZZA	15,28	mq
<hr/>		
SUP. COMMERCIALE	74,39	mq



VIALE ORIENTE



EDIFICIO 3



EDIFICIO 2



EDIFICIO 1

MARE



NB. QUANTO RAPPRESENTATO POTREBBE DISCOSTARSI LIEVEMENTE DAL PROGETTO ESECUTIVO



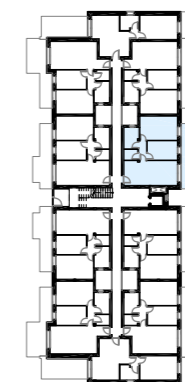
**JL BLUE RESORT**  
JESOLO LIVING

EDIFICIO 3  
**UNITA' C27**  
PIANO SECONDO

C27	SUP. LORDA	
ABITAZIONE	66,46	mq
TERRAZZA	14,88	mq
<hr/>		
SUP. COMMERCIALE	74,74	mq



VIALE ORIENTE



EDIFICIO 3



EDIFICIO 2



EDIFICIO 1

MARE

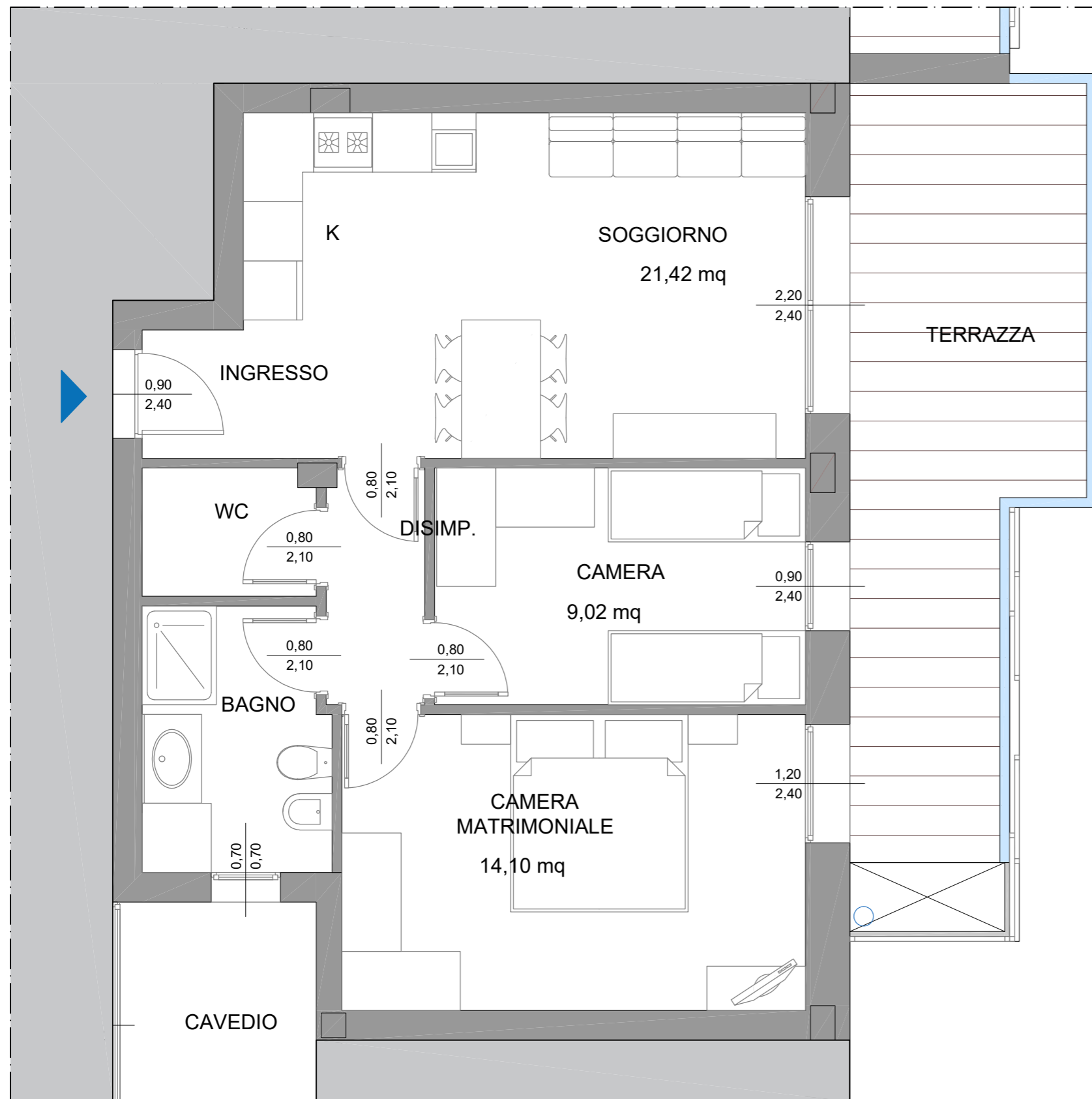




**JL BLUE RESORT**  
JESOLO LIVING

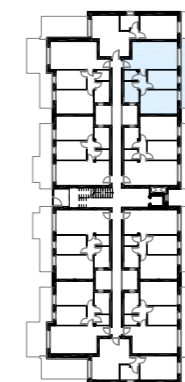
EDIFICIO 3  
**UNITA' C29**  
PIANO SECONDO

C29	SUP. LORDA	
ABITAZIONE	65,10	mq
TERRAZZA	17,16	mq
<hr/>		
SUP. COMMERCIALE	74,07	mq



0 m 5 m

VIALE ORIENTE



EDIFICIO 3



EDIFICIO 2



EDIFICIO 1

MARE



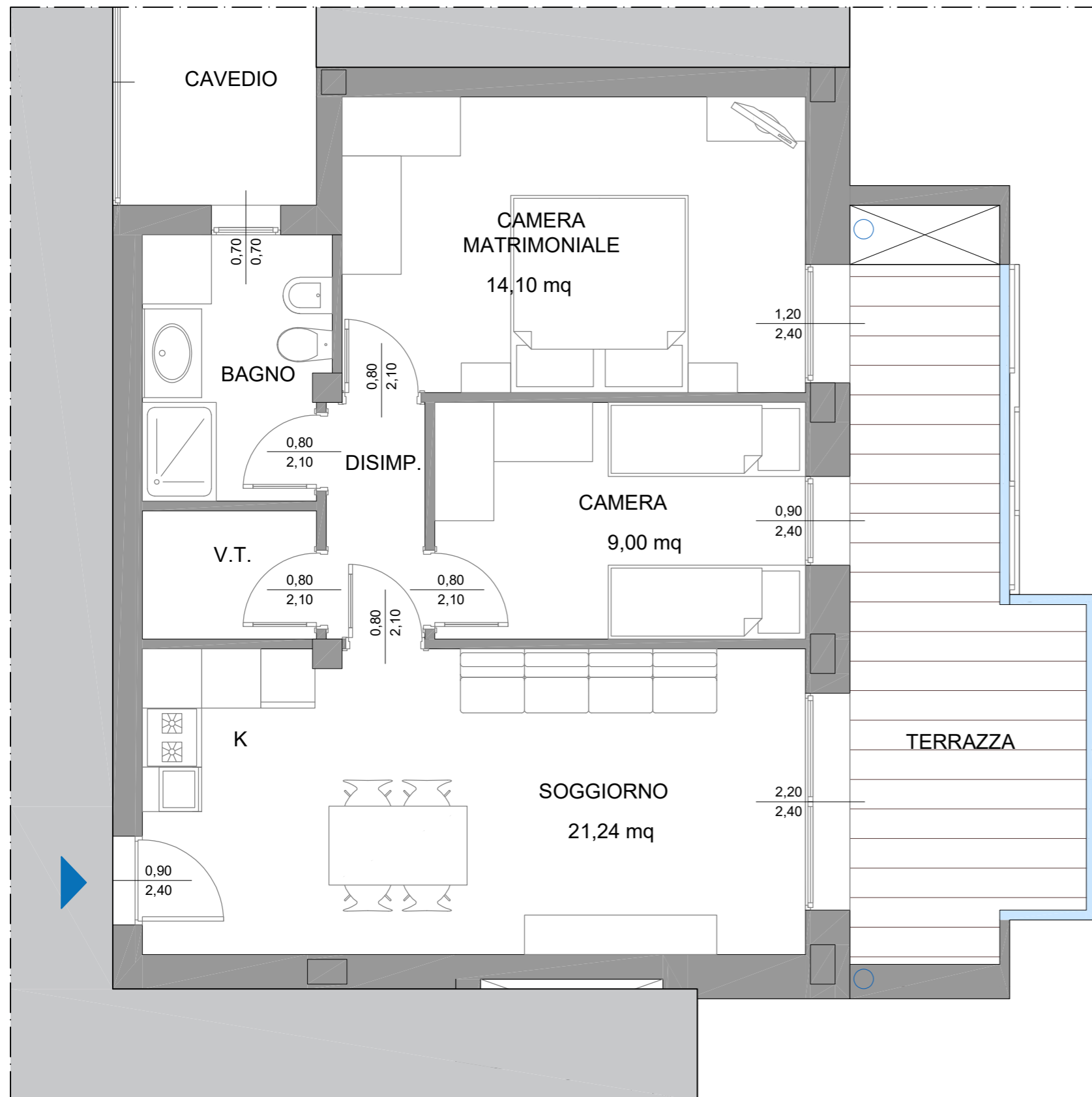
NB. QUANTO RAPPRESENTATO POTREBBE DISCOSTARSI LIEVEMENTE DAL PROGETTO ESECUTIVO



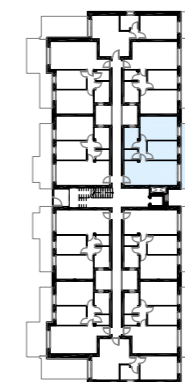
**JL BLUE RESORT**  
JESOLO LIVING

EDIFICIO 3  
**UNITA' C37**  
PIANO TERZO

C37	SUP. LORDA	
ABITAZIONE	66,46	mq
TERRAZZA	14,88	mq
<hr/>		
SUP. COMMERCIALE	74,74	mq



VIALE ORIENTE



EDIFICIO 3



EDIFICIO 2



EDIFICIO 1

MARE

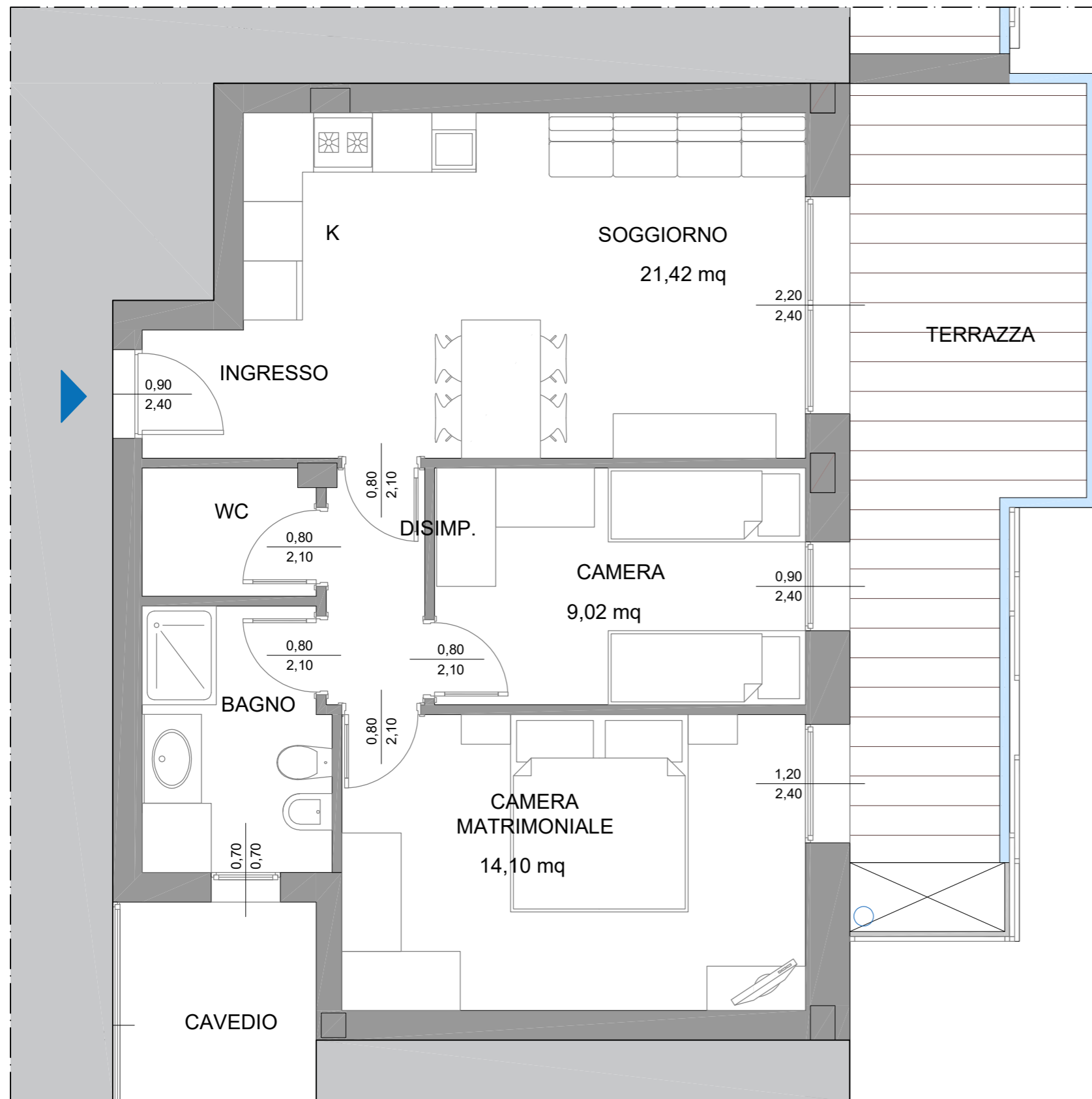




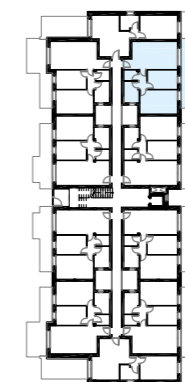
**JL BLUE RESORT**  
JESOLO LIVING

EDIFICIO 3  
**UNITA' C39**  
PIANO TERZO

C39	SUP. LORDA	
ABITAZIONE	65,10	mq
TERRAZZA	17,16	mq
<b>SUP. COMMERCIALE</b>		<b>74,07</b> mq



VIALE ORIENTE



EDIFICIO 3



EDIFICIO 2



EDIFICIO 1

MARE

